

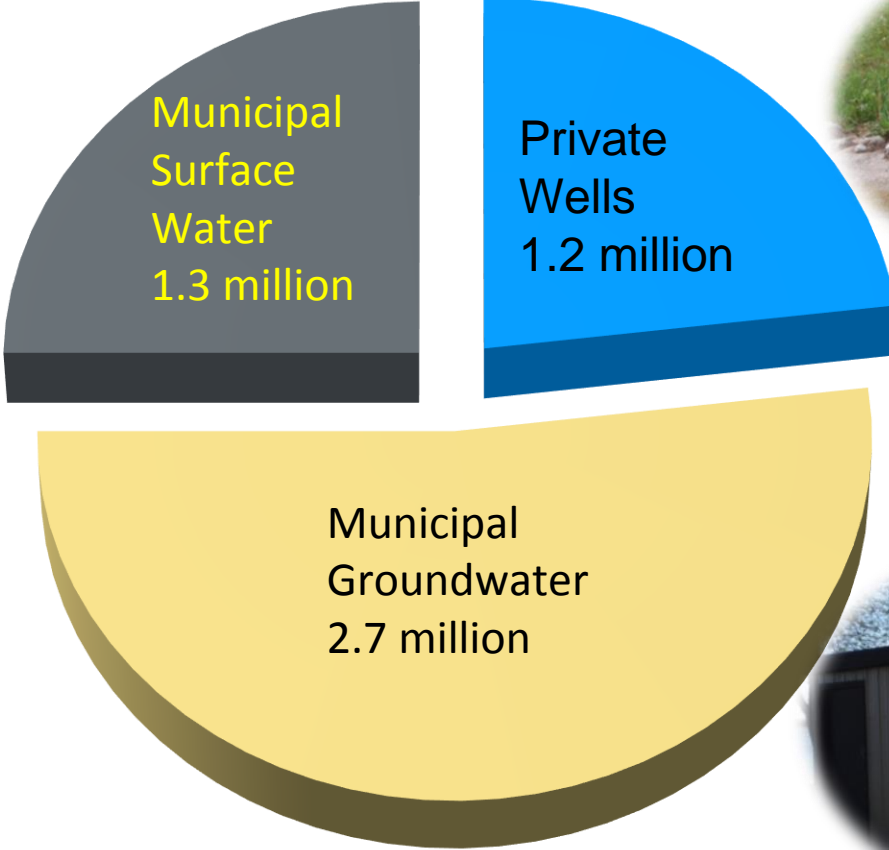


Advancing Source Water Protection in Minnesota – Addressing Gaps and Increasing Effectiveness

Steve Robertson | Source Water Protection -- MDH

June 15, 2017

Minnesota's Drinking Water Sources

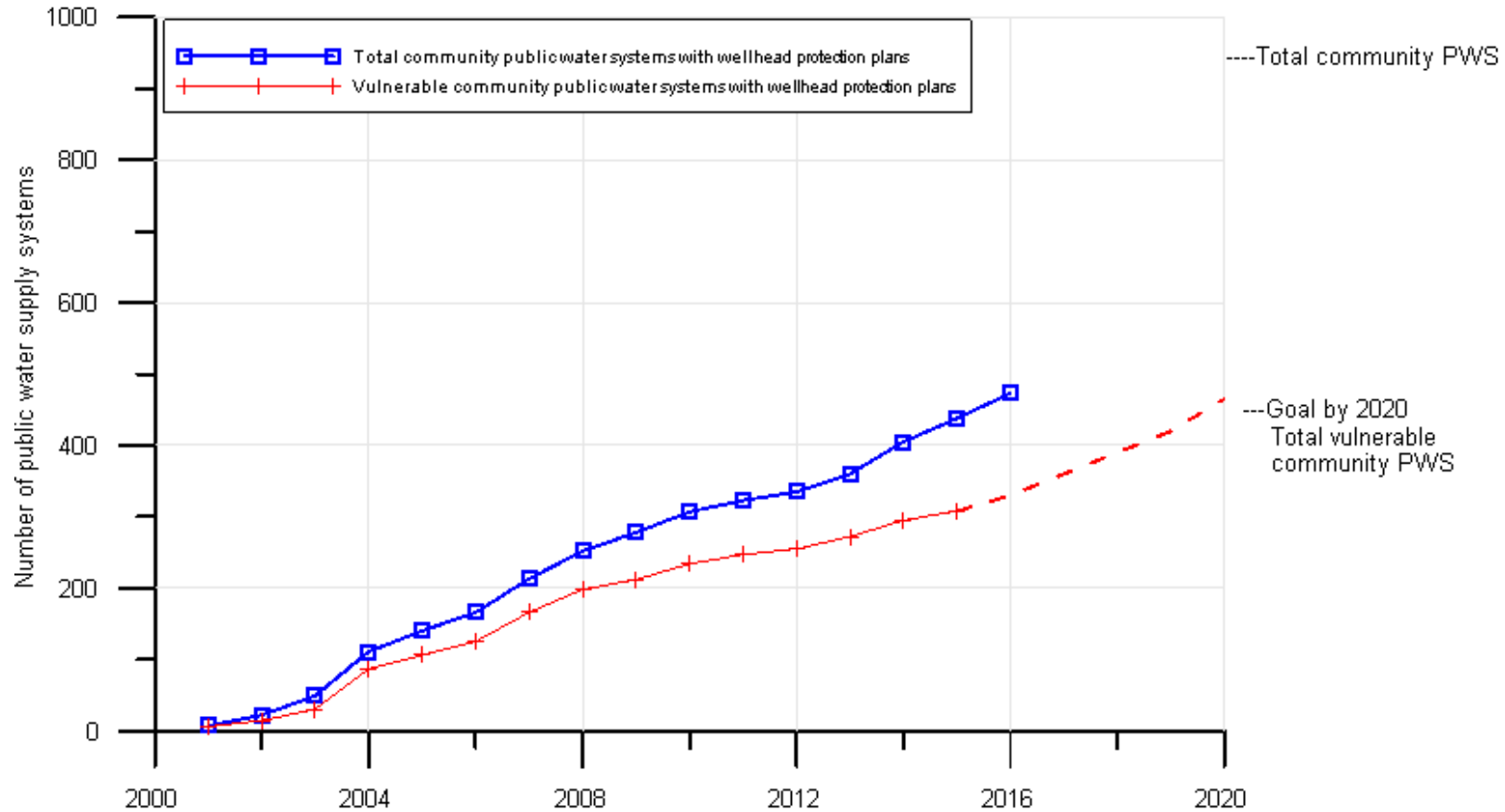


77 % from groundwater



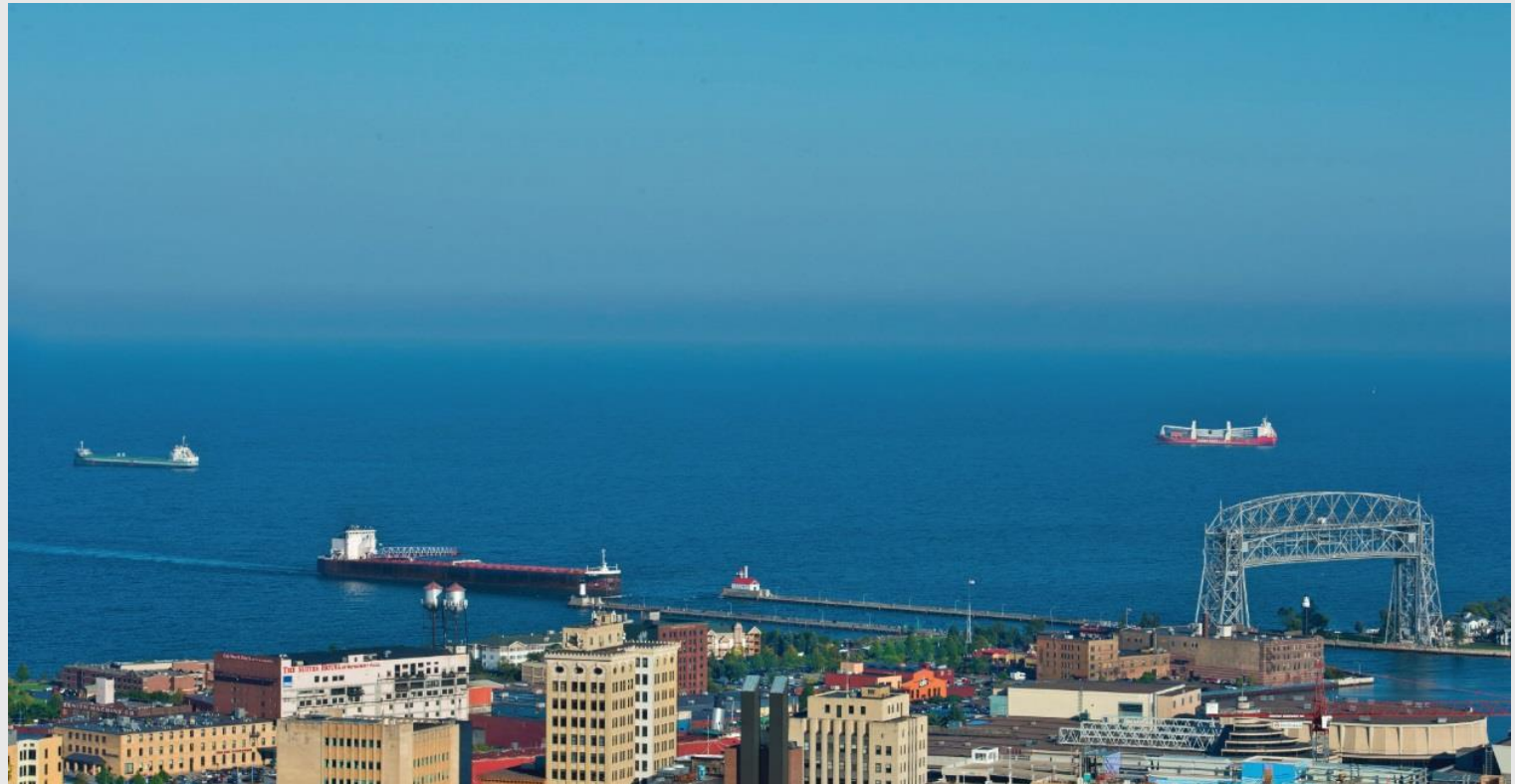
Twenty Years of Source Water Protection in Minnesota – Lessons Learned

Progress on Source Water Protection Planning in Minnesota

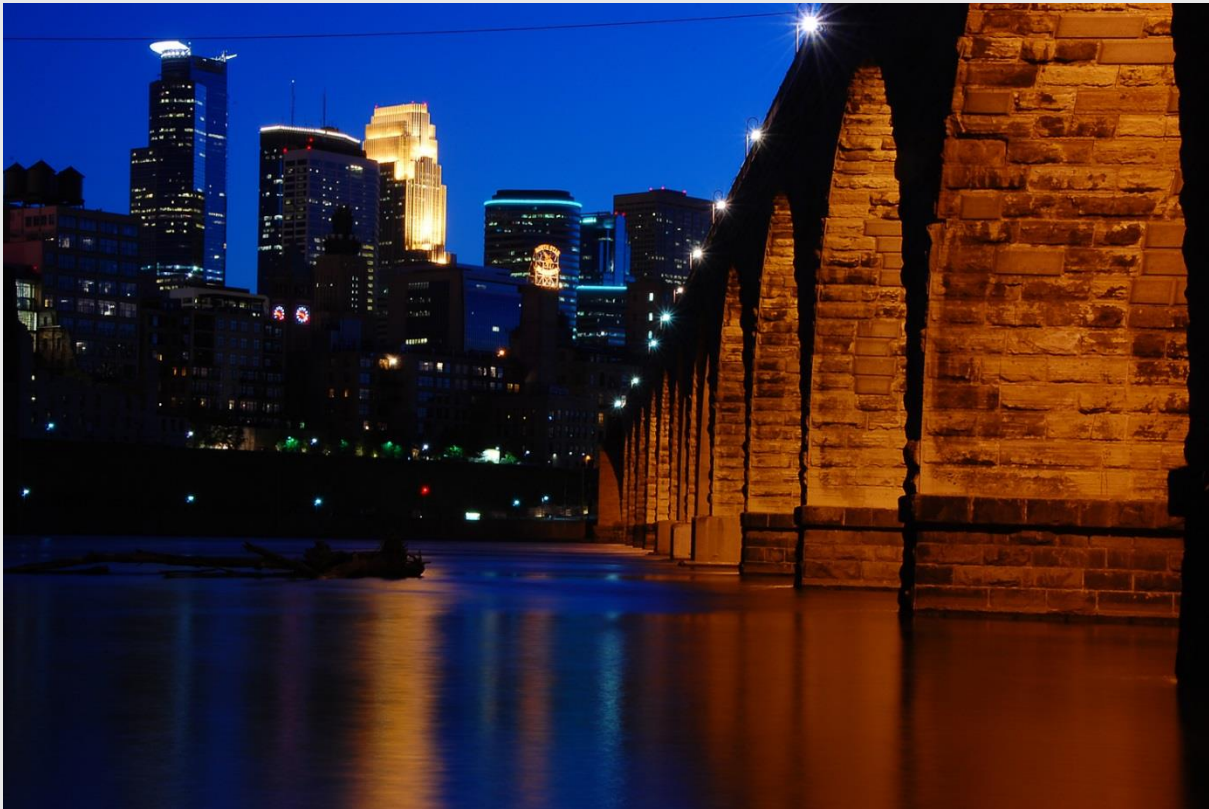


SWP for Surface Water Systems

- No funding or mandate for surface water work
 - Until now
- CWF support to help public water systems
 - Technical assistance
 - Financial assistance
- Voluntary



Components of Source Water Protection for surface water systems



- Priority area identification
- Monitoring
- Spill/Emergency management
- Targeted contaminant source inventory
- Assessment/gap analysis/integration
- Risk communication
- Threat mitigation/implementation

Drinking Water Source Protection and Local Comprehensive Watershed Planning

- 1W1P is integrated water resource management effort with local focus
- Orderly process for leveraging existing resources/authorities/capabilities
- Collaborate
- Prioritize, target

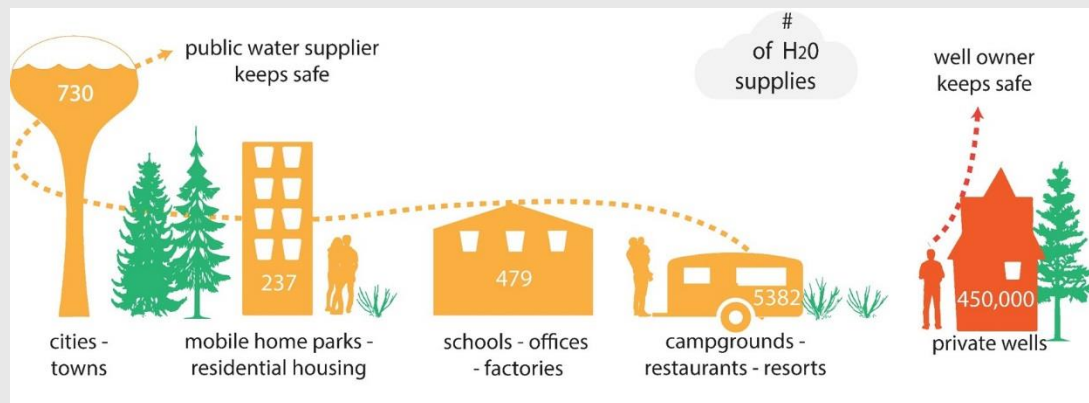


Keeping it local

- All public drinking water is locally sourced
- Drinking water protection is a priority at the local level
- Relationships and trust



Groundwater Restoration and Protection Strategies



- Analogue to WRAPS
- Process for delivering *existing* data/information, tools/approaches for assessment, strategies to restore and protect
- Multi-agency coordination
- Pilots
 - North Fork Crow River (2016)
 - Cannon, Missouri (2017)

Thank you again!



Steve Robertson

steve.robertson@state.mn.us

651-201-4648